



**sparco**  
Teamwork



english catalogue

2022

# SAFETY SHOES & WORKWEAR





## SPARCO AND SAFETY: AN INDISSOLUBLE COMBINATION

When you think about the concept of safety, the connection to Sparco is almost automatic. For more than forty years Sparco has been the official safety supplier of the most important world teams in the most dangerous sport in the world: **MOTORSPORT**.

Piquet, Prost, Schumacher, Hakkinen, Alonso, Loeb, Hamilton, Sainz (Sr. and Jr.), Ogier, Ricciardo, Norris - just to name a few - have relied or rely on Sparco to guarantee their safety during racing and to have the best performance in terms of comfort, weight and breathability.

Sparco Teamwork is the collection of shoes and workwear in which safety, lightness and design draw inspiration from the motorsport experience, translating into a work key with the same goal: to guarantee maximum performance.



**GP MONZA 2021**  
SPARCO and McLAREN WIN TOGETHER.

## KNOW-HOW SPARCO TEAMWORK

Its attention to detail, care devoted to the choice of sustainable materials and its construction of models totally styled, designed and validated in Italy has allowed SPARCO TEAMWORK to develop safety footwear with new sporty, comfortable and resistant lines in compliance with the **ESSENTIAL REQUIREMENTS OF HEALTH AND SAFETY** defined by Regulation (EU) 2016/425 on Personal Protective Equipment (PPE) with the **CE** mark.

Sparco Teamwork also wants to respond to all those workers who question the social costs demanded by the environment and the situations of exploitation of labour for their production through:

- A conscious and efficient use of environmental resources as common assets;
- The ability to enhance human resources and contribute to the development of the local community in which the company operates;
- Control of the entire supply chain by integrating environmental and energy factors, the safety of materials, biodegradability, recycling and logistics;
- Respect for the fundamental rights of people and workers considering compliance with labour law, protection against child exploitation, guarantees of safety and health in the workplace;
- The enhancement of diversity and inclusion by promoting gender plurality, ethnic, religious and sexual diversity and psycho-physical skills in order to improve people's motivation through training courses dedicated to professional development.

We are convinced that a new SPARCO TEAMWORK brand safety shoe can be born only from new business models and projects that take into account the aforementioned fundamentals.

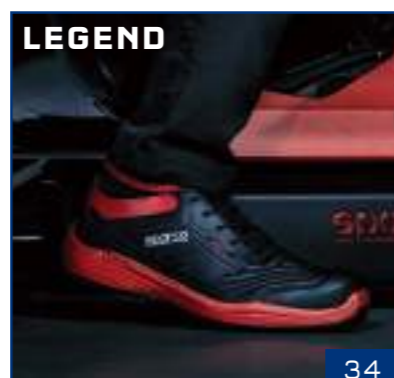


**CARLOS SAINZ, Sr.**  
2 times WRC World Champion  
3 times Winner of the DAKAR

# CONTENTS

## 2022

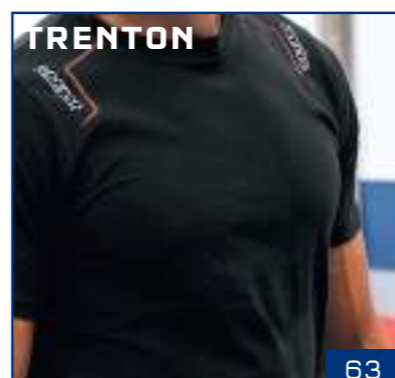
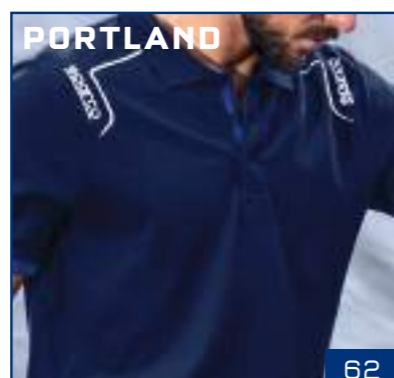
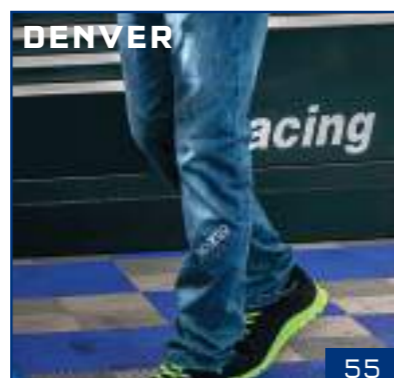
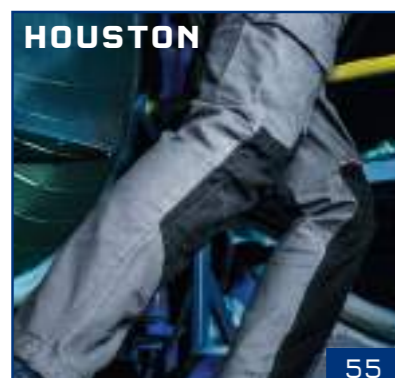
### SAFETY SHOES LINES



# CONTENTS

## 2022

### WORKWEAR



### GLOVES



### POP TOOLS



sparco®

# TEAMWORK TECHNOLOGY

SPARCO TEAMWORK shoes are developed using the best technologies in terms of soles and midsoles, in order to optimize the exertion produced in walking by the sole of the foot where the greatest stresses for the user are concentrated, thus returning 70% of the ENERGY produced.

This benefit offers advantages in using SPARCO TEAMWORK footwear, such as:

- less fatigue at the end of the day, thus improving reflexes and attention to the dangers of slipping and tripping injuries
- less exertion in walking
- less strain on the back and spine
- relaxation of the muscles



## MULTIGRIP



Ultralight sole with shock absorbing effect provided by a thick ultralight EVA midsole and MULTIGRIP RUBBER tread.

## FLATGRIP



Ultralight sole in dual-density polyurethane coming from the world of racing, ergonomically designed on the soles of the foot to ensure an extensive support surface.

## RUNFLEX



Ultralight sole in single-density polyurethane designed for intensive use where the foot bends frequently.

## PRISMFLX



Ultralight sole with EVA midsole and genuine rubber tread with PRISMA texture that provides strong grip in all foot bending conditions.

## MOTIONGRIP



The special design of the MOTIONGRIP sole lugs is conceived to follow all the movements of the foot, guaranteeing ultimate grip.

## CROSSGRIP



Ultralight sole with PHYLON midsole and CROSSGRIP rubber tread with lugs that guarantee a strong grip even on particularly uneven surfaces.

## STREETTECH



Ultralight dual-density polyurethane sole designed to facilitate dynamic use and move safely in all situations.

## TWISTTECH



Ultralight sole with phylon midsole and rubber tread. Ideal for all uses, even for outdoors in leisure time.

SAFETY SHOES LINE  
SAFETY SHOES LINE  
SAFETY SHOES LINE  
SAFETY SHOES LINE  
SAFETY SHOES LINE  
SAFETY SHOES LINE  
SAFETY SHOES LINE  
SAFETY SHOES LINE  
SAFETY SHOES LINE  
SAFETY SHOES LINE



# NEW GYMKHANA Line



**SNEAKER-STYLE SAFETY FOOTWEAR, WITH EVA MIDSOLE AND MULTIGRIP RUBBER TREAD, VELOUR MICROFIBRE UPPER AND BREATHABLE MICRO-PERFORATED FABRIC. CONVENIENT FOR ALL USES.**

EN ISO 20345:2011



**SUPERLIGHT EVA MIDSOLE AND MULTIGRIP RUBBER TREAD.**



## LANDO S1P SRC

07527..AZBM



**TOE CAP:**  
in non-magnetic composite, insulating, resistant to 200J.

**ANTI-PERFORATION INSOLE:**  
made from zero-perforation textile fibre.

**SOLE:**  
EVA midsole and nitrile rubber tread with energy absorption on heel.

**REMOVABLE INSOLE:**  
antistatic in PU with ergonomic thermoforming.

**LINING:**  
breathable micro-perforated 3D fabric.

**UPPER:**  
in velour microfibre and breathable micro-perforated fabric. Additional 2nd color laces included.

**SIZES:**  
36-48 (UK 3 1/2 -13)

## MAX S1P SRC

07527..NRGR



**TOE CAP:**  
in non-magnetic composite, insulating, resistant to 200J.

**ANTI-PERFORATION INSOLE:**  
made from zero-perforation textile fibre.

**SOLE:**  
EVA midsole and nitrile rubber tread with energy absorption on heel.

**REMOVABLE INSOLE:**  
antistatic in PU with ergonomic thermoforming.

**LINING:**  
breathable micro-perforated 3D fabric.

**UPPER:**  
in velour microfibre and breathable micro-perforated fabric. Additional 2nd color laces included.

**SIZES:**  
36-48 (UK 3 1/2 -13)

## DANI S1P SRC

07527..BMGF



**TOE CAP:**  
in non-magnetic composite, insulating, resistant to 200J.

**ANTI-PERFORATION INSOLE:**  
made from zero-perforation textile fibre.

**SOLE:**  
EVA midsole and nitrile rubber tread with energy absorption on heel.

**REMOVABLE INSOLE:**  
antistatic in PU with ergonomic thermoforming.

**LINING:**  
breathable micro-perforated 3D fabric.

**UPPER:**  
in velour microfibre and breathable micro-perforated fabric. Additional 2nd color laces included.

**SIZES:**  
36-48 (UK 3 1/2 -13)

## SEB S1P SRC

07527..VSLI



**TOE CAP:**  
in non-magnetic composite, insulating, resistant to 200J.

**ANTI-PERFORATION INSOLE:**  
made from zero-perforation textile fibre.

**SOLE:**  
EVA midsole and nitrile rubber tread with energy absorption on heel.

**REMOVABLE INSOLE:**  
antistatic in PU with ergonomic thermoforming.

**LINING:**  
breathable micro-perforated 3D fabric.

**UPPER:**  
in velour microfibre and breathable micro-perforated fabric. Additional 2nd color laces included.

**SIZES:**  
36-48 (UK 3 1/2 -13)



# NEW GYMKHANA Line MARTINI RACING

**SNEAKER-STYLE SAFETY FOOTWEAR**  
WITH **SPECIAL MARTINI RACING LIVERY**,  
EVA MIDSOLE AND **MULTIGRIP** RUBBER TREAD,  
VELOUR MICROFIBRE UPPER AND BREATHABLE  
MICRO-PERFORATED FABRIC.  
**CONVENIENT FOR ALL USES.**



Self-cleaning profiles  
for the outflow of liquids.

Sculpted lugs for greater  
slip resistance.



Self-cleaning profiles  
for the drainage of liquids.



**MULTIGRIP**

**SUPERLIGHT EVA MIDSOLE  
AND MULTIGRIP RUBBER TREAD.**

CE EN ISO 20345:2011

MONDOPOINT  
10,5

## MARTINI S1P SRC

07527MR..BM



**TOE CAP:**  
in non-magnetic composite, insulating, resistant to 200J.

**ANTI-PERFORATION INSOLE:**  
made from zero-perforation textile fibre.

**SOLE:**  
EVA midsole and nitrile rubber tread  
with energy absorption on heel.

**REMOVABLE INSOLE:**  
antistatic in PU with ergonomic  
thermoforming.

**LINING:**  
breathable micro-perforated 3D fabric.

**UPPER:**  
in velour microfibre and breathable  
micro-perforated fabric. Additional 2nd color laces included.

**SIZES:**  
36-48 (UK 3 1/2 -13)

## MECHANIC SUIT REPLICA MARTINI RACING

002020MR..



**SPECIFICATIONS:**  
Original replica suit  
of the iconic  
Sparco - Martini Racing  
Mechanic suit.

**MATERIAL:**  
85% polyester  
15% cotton

**SIZES:**  
S-XXL

Visit  
[sparco-official.com](http://sparco-official.com)

**RUNNING-STYLE SAFETY FOOTWEAR WITH BREATHABLE MICRO-PERFORATED 3D FABRIC AND SCRATCH-RESISTANT MICROFIBRE. IDEAL FOR INDOOR USE.**

CE EN ISO 20345:2011

MONDOPOINT  
10,5

Laminar profiles to increase grip.

Profiles engraved for a better grip on the stairs.

Laminar profiles for greater slipping resistance.

**ULTRA-FLEXIBLE SINGLE-DENSITY PU THAT INCREASES COMFORT AND REDUCES STRESS TO THE LOWER LIMBS AND THE SPINE.**

**RUNFLEX**

### JOS S1P SRC

07517..NRGF



**TOE CAP:**  
in non-magnetic composite, insulating, resistant to 200J.

**ANTI-PERFORATION INSOLE:**  
made from zero-perforation textile fibre.

**SOLE:**  
single-density PU with energy absorption on the heel.

**REMOVABLE INSOLE:**  
antistatic in PU with ergonomic thermoforming.

**LINING:**  
breathable micro-perforated 3D fabric.

**UPPER:**  
breathable micro-perforated fabric and scratch-resistant microfibre with high abrasion resistance.

**SIZES:**  
36-48 (UK 3 ½ -13)

### JACQUES S1P SRC

07517..NRRS



**TOE CAP:**  
in non-magnetic composite, insulating, resistant to 200J.

**ANTI-PERFORATION INSOLE:**  
made from zero-perforation textile fibre.

**SOLE:**  
single-density PU with energy absorption on the heel.

**REMOVABLE INSOLE:**  
antistatic in PU with ergonomic thermoforming.

**LINING:**  
breathable micro-perforated 3D fabric.

**UPPER:**  
breathable micro-perforated fabric and scratch-resistant microfibre with high abrasion resistance.

**SIZES:**  
36-48 (UK 3 ½ -13)

### NIGEL S1P SRC

07517..NRNR



**TOE CAP:**  
in non-magnetic composite, insulating, resistant to 200J.

**ANTI-PERFORATION INSOLE:**  
made from zero-perforation textile fibre.

**SOLE:**  
single-density PU with energy absorption on the heel.

**REMOVABLE INSOLE:**  
antistatic in PU with ergonomic thermoforming.

**LINING:**  
breathable micro-perforated 3D fabric.

**UPPER:**  
breathable micro-perforated fabric and scratch-resistant microfibre with high abrasion resistance.

**SIZES:**  
36-48 (UK 3 ½ -13)

### JODY S1P SRC

07517..NRFU



**TOE CAP:**  
in non-magnetic composite, insulating, resistant to 200J.

**ANTI-PERFORATION INSOLE:**  
made from zero-perforation textile fibre.

**SOLE:**  
single-density PU with energy absorption on the heel.

**REMOVABLE INSOLE:**  
antistatic in PU with ergonomic thermoforming.

**LINING:**  
breathable micro-perforated 3D fabric.

**UPPER:**  
breathable micro-perforated fabric and scratch-resistant microfibre with high abrasion resistance.

**SIZES:**  
36-43 (UK 3 ½ - 9)

## KEKE S1P SRC

07517..NRVF



**TOE CAP:**  
in non-magnetic composite, insulating, resistant to 200J.

**ANTI-PERFORATION INSOLE:**  
made from zero-perforation textile fibre.

**SOLE:**  
single-density PU with energy absorption on the heel.

**REMOVABLE INSOLE:**  
antistatic in PU with ergonomic thermoforming.

**LINING:**  
breathable micro-perforated 3D fabric.

**UPPER:**  
breathable micro-perforated fabric and scratch-resistant microfibre with high abrasion resistance.

**SIZES:**  
36-48 (UK 3 ½ -13)

## NELSON S1P SRC

07517..NRAZ



**TOE CAP:**  
in non-magnetic composite, insulating, resistant to 200J.

**ANTI-PERFORATION INSOLE:**  
made from zero-perforation textile fibre.

**SOLE:**  
single-density PU with energy absorption on the heel.

**REMOVABLE INSOLE:**  
antistatic in PU with ergonomic thermoforming.

**LINING:**  
breathable micro-perforated 3D fabric.

**UPPER:**  
breathable micro-perforated fabric and scratch-resistant microfibre with high abrasion resistance.

**SIZES:**  
36-48 (UK 3 ½ -13)

## NIKI S1P SRC

07517..AZAF



**TOE CAP:**  
in non-magnetic composite, insulating, resistant to 200J.

**ANTI-PERFORATION INSOLE:**  
made from zero-perforation textile fibre.

**SOLE:**  
single-density PU with energy absorption on the heel.

**REMOVABLE INSOLE:**  
antistatic in PU with ergonomic thermoforming.

**LINING:**  
breathable micro-perforated 3D fabric.

**UPPER:**  
breathable micro-perforated fabric and scratch-resistant microfibre with high abrasion resistance.

**SIZES:**  
36-48 (UK 3 ½ -13)



**RUNNING-STYLE SAFETY FOOTWEAR**  
IN WATER-REPELLENT MICROFIBRE AND SUEDE,  
IDEAL FOR BOTH INDOOR AND OUTDOOR USE.



Laminar profiles  
to increase grip.

Laminar profiles for greater  
slipping resistance.

Profiles engraved for a better  
grip on the stairs.



**ULTRA-FLEXIBLE SINGLE-DENSITY PU**  
THAT INCREASES COMFORT  
AND REDUCES STRESS TO THE LOWER  
LIMBS AND THE SPINE.



**RUNFLEX**

### PETTER S3 SRC

07522..NRAZ



**TOE CAP:**  
in non-magnetic composite, insulating, resistant to 200J.

**ANTI-PERFORATION INSOLE:**  
made from zero-perforation textile fibre.

**SOLE:**  
single-density PU with energy  
absorption on the heel.

**REMOVABLE INSOLE:**  
antistatic in PU with ergonomic  
thermoforming.

**LINING:**  
breathable micro-perforated 3D fabric.

**UPPER:**  
in high-quality water-repellent microfibre.

**SIZES:**  
36-48 (UK 3 ½ -13)

### DIDIER S3 SRC

07522..NRGR



**TOE CAP:**  
in non-magnetic composite, insulating, resistant to 200J.

**ANTI-PERFORATION INSOLE:**  
made from zero-perforation textile fibre.

**SOLE:**  
single-density PU with energy  
absorption on the heel.

**REMOVABLE INSOLE:**  
antistatic in PU with ergonomic  
thermoforming.

**LINING:**  
breathable micro-perforated 3D fabric.

**UPPER:**  
in high-quality water-repellent microfibre.

**SIZES:**  
36-48 (UK 3 ½ -13)

### MARCUS S3 SRC

07522..RSNR



**TOE CAP:**  
in non-magnetic composite, insulating, resistant to 200J.

**ANTI-PERFORATION INSOLE:**  
made from zero-perforation textile fibre.

**SOLE:**  
single-density PU with energy  
absorption on the heel.

**REMOVABLE INSOLE:**  
antistatic in PU with ergonomic  
thermoforming.

**LINING:**  
breathable micro-perforated 3D fabric.

**UPPER:**  
in high-quality water-repellent microfibre and suede.

**SIZES:**  
36-48 (UK 3 ½ -13)

**OTT S3 SRC**

**07522..NRVF**



**TOE CAP:**  
in non-magnetic composite, insulating, resistant to 200J.

**ANTI-PERFORATION INSOLE:**  
made from zero-perforation textile fibre.

**SOLE:**  
single-density PU with energy absorption on the heel.

**REMOVABLE INSOLE:**  
antistatic in PU with ergonomic thermoforming.

**LINING:**  
breathable micro-perforated 3D fabric.

**UPPER:**  
in high-quality water-repellent microfibre.

**SIZES:**  
36-48 (UK 3 ½ -13)

**HANNU S3 SRC**

**07522..BIBI**



**TOE CAP:**  
in non-magnetic composite, insulating, resistant to 200J.

**ANTI-PERFORATION INSOLE:**  
made from zero-perforation textile fibre.

**SOLE:**  
single-density PU with energy absorption on the heel.

**REMOVABLE INSOLE:**  
antistatic in PU with ergonomic thermoforming.

**LINING:**  
breathable micro-perforated 3D fabric.

**UPPER:**  
in high-quality water-repellent microfibre.

**SIZES:**  
36-48 (UK 3 ½ -13)

**MIKKO S3 SRC**

**07522..NRNR**



**TOE CAP:**  
in non-magnetic composite, insulating, resistant to 200J.

**ANTI-PERFORATION INSOLE:**  
made from zero-perforation textile fibre.

**SOLE:**  
single-density PU with energy absorption on the heel.

**REMOVABLE INSOLE:**  
antistatic in PU with ergonomic thermoforming.

**LINING:**  
breathable micro-perforated 3D fabric.

**UPPER:**  
in high-quality water-repellent microfibre.

**SIZES:**  
36-48 (UK 3 ½ -13)

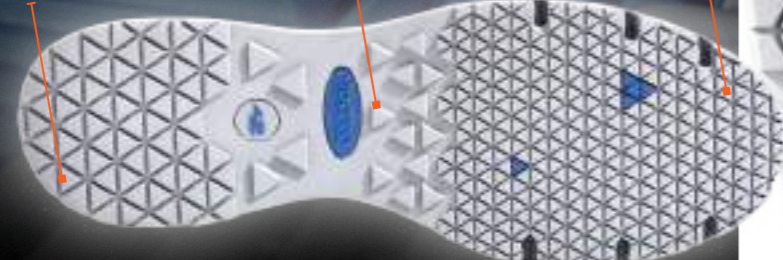


**SAFETY FOOTWEAR IN BREATHABLE JACQUARD FABRIC AND REINFORCEMENT IN PU FILM COATED ON THE TOE, IDEAL FOR INDOOR USE.**



Sharp-angled lugs for greater grip on oily surfaces.

Engraved crampons for greater grip on stairs.



**PRISM FLEX**

**ULTRALIGHT EVA MIDSOLE AND NITRILE RUBBER TREAD WITH ENERGY ABSORPTION ON THE HEEL.**

## RICARD S1P SRC

07526..NRAZ



**TOE CAP:**  
in non-magnetic composite, insulating, resistant to 200J.

**ANTI-PERFORATION INSOLE:**  
made from zero-perforation textile fibre.

**SOLE:**  
EVA midsole and nitrile rubber tread with energy absorption on heel.

**REMOVABLE INSOLE:**  
antistatic in PU with ergonomic thermoforming.

**LINING:**  
breathable micro-perforated 3D fabric.

**UPPER:**  
Ultra-breathable jacquard weave with PU film reinforcement coating on the toe.

**SIZES:**  
35-46 (UK 2 ½ - 11 ½)

## ADELAIDE S1P SRC

07526..NRVF



**TOE CAP:**  
in non-magnetic composite, insulating, resistant to 200J.

**ANTI-PERFORATION INSOLE:**  
made from zero-perforation textile fibre.

**SOLE:**  
EVA midsole and nitrile rubber tread with energy absorption on heel.

**REMOVABLE INSOLE:**  
antistatic in PU with ergonomic thermoforming.

**LINING:**  
breathable micro-perforated 3D fabric.

**UPPER:**  
Ultra-breathable jacquard weave with PU film reinforcement coating on the toe.

**SIZES:**  
35-46 (UK 2 ½ - 11 ½)

## ALBERT S1P SRC

07526..NRRS



**TOE CAP:**  
in non-magnetic composite, insulating, resistant to 200J.

**ANTI-PERFORATION INSOLE:**  
made from zero-perforation textile fibre.

**SOLE:**  
EVA midsole and nitrile rubber tread with energy absorption on heel.

**REMOVABLE INSOLE:**  
antistatic in PU with ergonomic thermoforming.

**LINING:**  
breathable micro-perforated 3D fabric.

**UPPER:**  
Ultra-breathable jacquard weave with PU film reinforcement coating on the toe.

**SIZES:**  
35-46 (UK 2 ½ - 11 ½)

# SPORT EVO Line RACING EVO Line

**SAFETY FOOTWEAR** COMING FROM THE WORLD OF RACING IN HIGH-QUALITY SMOOTH AND SUEDE OR NUBUCK LEATHER, ELEGANT, COMFORTABLE AND HARD-WEARING, **IDEAL FOR OUTDOOR USE.**

CE EN ISO 20345:2011



**SPORTS SOLE** COMING FROM THE MOTORSPORT WORLD WITH EXCELLENT TECHNICAL AND NON-SLIP PROPERTIES PROVIDED BY THE LUGS DESIGNED FOR GREATER DIAGONAL AND LONGITUDINAL GRIP. THE TREAD ASSISTS BENDING WHILE WALKING AND PREVENTS PROBLEMS TO THE LOWER LIMBS AND THE SPINE.



## SPA ESD S3 SRC

07516..NRGR



**TOE CAP:**  
in non-magnetic composite, insulating, resistant to 200J.

**ANTI-PERFORATION INSOLE:**  
made from zero-perforation textile fibre.

**SOLE:**  
dual-density PU with energy absorption on the heel.

**REMOVABLE INSOLE:**  
Antistatic in PU with ergonomic thermoforming.

**LINING:**  
breathable micro-perforated 3D fabric.

**UPPER:**  
in high-quality nubuck leather with scratch-resistant microfibre heel insert.

**SIZES:**  
38-48 (UK 5 - 13)

## RONNIE ESD S3 SRC

07515..NRVF



**TOE CAP:**  
in non-magnetic composite, insulating, resistant to 200J.

**ANTI-PERFORATION INSOLE:**  
made from zero-perforation textile fibre.

**SOLE:**  
dual-density PU with energy absorption on the heel.

**REMOVABLE INSOLE:**  
Antistatic in PU with ergonomic thermoforming.

**LINING:**  
breathable micro-perforated 3D fabric.

**UPPER:**  
in high-quality smooth leather, nubuck leather and water-repellent suede leather, tongue in soft nylon and inserts in scratch-resistant microfibre.

**SIZES:**  
38-48 (UK 5 - 13)

## LOSAIL S3 SRC

07516..NRNR



**TOE CAP:**  
in non-magnetic composite, insulating, resistant to 200J.

**ANTI-PERFORATION INSOLE:**  
made from zero-perforation textile fibre.

**SOLE:**  
dual-density PU with energy absorption on the heel.

**REMOVABLE INSOLE:**  
Antistatic in PU with ergonomic thermoforming.

**LINING:**  
breathable micro-perforated 3D fabric.

**UPPER:**  
in high-quality water-repellent suede leather with scratch-resistant microfibre heel insert.

**SIZES:**  
38-48 (UK 5 - 13)

## CLAY S3 SRC

07515..NRNR



**TOE CAP:**  
in non-magnetic composite, insulating, resistant to 200J.

**ANTI-PERFORATION INSOLE:**  
made from zero-perforation textile fibre.

**SOLE:**  
dual-density PU with energy absorption on the heel.

**REMOVABLE INSOLE:**  
Antistatic in PU with ergonomic thermoforming.

**LINING:**  
breathable micro-perforated 3D fabric.

**UPPER:**  
in high-quality smooth leather, nubuck leather and water-repellent suede leather, tongue in soft nylon and inserts in scratch-resistant microfibre.

**SIZES:**  
38-48 (UK 5 - 13)

**DONINGTON S3 SRC**

**07516..RSNR**



**TOE CAP:**  
in non-magnetic composite, insulating, resistant to 200J.

**ANTI-PERFORATION INSOLE:**  
made from zero-perforation textile fibre.

**SOLE:**  
dual-density PU with energy absorption on the heel.

**REMOVABLE INSOLE:**  
Antistatic in PU with ergonomic thermoforming.

**LINING:**  
breathable micro-perforated 3D fabric.

**UPPER:**  
In high-quality nubuck leather and water-repellent suede leather inserts with scratch-resistant microfibre heel insert.

**SIZES:**  
38-48 (UK 5 - 13)

**BRUCE S3 SRC**

**07515..RSNR**



**TOE CAP:**  
in non-magnetic composite, insulating, resistant to 200J.

**ANTI-PERFORATION INSOLE:**  
made from zero-perforation textile fibre.

**SOLE:**  
dual-density PU with energy absorption on the heel.

**REMOVABLE INSOLE:**  
antistatic in PU with ergonomic thermoforming.

**LINING:**  
breathable micro-perforated 3D fabric.

**UPPER:**  
in high-quality smooth leather, nubuck leather and water-repellent suede leather, tongue in soft nylon and inserts in scratch-resistant microfibre.

**SIZES:**  
38-48 (UK 5 - 13)

**GILLES ESD S3 SRC**

**07515..AZAZ**



**TOE CAP:**  
in non-magnetic composite, insulating, resistant to 200J.

**ANTI-PERFORATION INSOLE:**  
made from zero-perforation textile fibre.

**SOLE:**  
dual-density PU with energy absorption on the heel.

**REMOVABLE INSOLE:**  
antistatic in PU with ergonomic thermoforming.

**LINING:**  
breathable micro-perforated 3D fabric.

**UPPER:**  
In high-quality water-repellent suede leather, soft nylon tongue

**SIZES:**  
38-48 (UK 5 - 13)





**SNEAKER-STYLE SAFETY  
FOOTWEAR, COMFORTABLE  
AND SUITABLE FOR PROLONGED  
USE IN A PROFESSIONAL  
AND URBAN ENVIRONMENT.**

CE EN ISO 20345:2011

MONDOPOINT  
10,5



**SPORTS SOLE COMING FROM THE MOTORSPORT  
WORLD WITH EXCELLENT TECHNICAL AND NON-SLIP  
PROPERTIES PROVIDED BY THE LUGS DESIGNED  
FOR GREATER DIAGONAL AND LONGITUDINAL GRIP.  
THE TREAD ASSISTS BENDING WHILE WALKING  
AND PREVENTS PROBLEMS TO THE LOWER LIMBS  
AND THE SPINE.**



### MAGIONE ESD S3 SRC

07518..BMAZ



**TOE CAP:**  
in non-magnetic composite, insulating, resistant to 200J.

**ANTI-PERFORATION INSOLE:**  
made from zero-perforation textile fibre.

**SOLE:**  
dual-density PU with energy  
absorption on the heel.

**REMOVABLE INSOLE:**  
antistatic in PU with ergonomic  
thermoforming.

**LINING:**  
breathable micro-perforated 3D fabric.

**UPPER:**  
in nylon with reinforcements in high-quality  
water-repellent suede leather.

**SIZES:**  
38-48 (UK 5 - 13)

### SARNO S1P SRC

07518..BMGR



**TOE CAP:**  
in non-magnetic composite, insulating, resistant to 200J.

**ANTI-PERFORATION INSOLE:**  
made from zero-perforation textile fibre.

**SOLE:**  
dual-density PU with energy  
absorption on the heel.

**REMOVABLE INSOLE:**  
antistatic in PU with ergonomic  
thermoforming.

**LINING:**  
breathable micro-perforated 3D fabric.

**UPPER:**  
in nylon with reinforcements in high-quality  
suede leather.

**SIZES:**  
38-48 (UK 5 - 13)

### MODENA S3 SRC

07518..NRRS



**TOE CAP:**  
in non-magnetic composite, insulating, resistant to 200J.

**ANTI-PERFORATION INSOLE:**  
made from zero-perforation textile fibre.

**SOLE:**  
dual-density PU with energy  
absorption on the heel.

**REMOVABLE INSOLE:**  
antistatic in PU with ergonomic  
thermoforming.

**LINING:**  
breathable micro-perforated 3D fabric.

**UPPER:**  
in nylon with reinforcements in high-quality  
water-repellent suede leather.

**SIZES:**  
38-48 (UK 5 - 13)

### LONATO S1P SRC

07518..NRRR



**TOE CAP:**  
in non-magnetic composite, insulating, resistant to 200J.

**ANTI-PERFORATION INSOLE:**  
made from zero-perforation textile fibre.

**SOLE:**  
dual-density PU with energy  
absorption on the heel.

**REMOVABLE INSOLE:**  
antistatic in PU with ergonomic  
thermoforming.

**LINING:**  
breathable micro-perforated 3D fabric.

**UPPER:**  
in nylon with reinforcements in high-quality  
suede leather.

**SIZES:**  
38-48 (UK 5 - 13)

**ULTRALIGHT SAFETY FOOTWEAR WITH SOCK UPPER, IN BREATHABLE MICRO-PERFORATED 3D FABRIC WITH HF PROCESSING AND WATER-REPELLENT FILM COATING, MICRO-INJECTED REINFORCEMENTS AND GENUINE CARBON FIBRE TOE CAP. IDEAL FOR BOTH INDOOR AND OUTDOOR USE.**



EN ISO 20345:2011

MONDOPOINT 10,5

Laminar profiles to increase grip.

Laminar profiles for greater slipping resistance.



Profiles engraved for enhanced grip on stairs.



MOTIONGRIP

DOUBLE DENSITY PU WITH ENERGY ABSORPTION IN THE HEEL

## REAL CARBON FIBRE TOE CAP



60% LIGHTER

### SPLITTER ESD S3 SRC

07525..NRRS



**TOE CAP:** in carbon fibre, non-magnetic, insulating, resistant to 200J.

**ANTI-PERFORATION INSOLE:** made from zero-perforation textile fibre.

**SOLE:** dual-density polyurethane with energy absorption on the heel.

**REMOVABLE INSOLE:** antistatic in PU with ergonomic thermoforming.

**LINING:** in breathable sock knit.

**UPPER:** sock type in breathable micro-perforated 3D fabric, high-frequency processing and water-repellent film coating, micro-injected inserts.

**SIZES:** 38-48 (UK 5 - 13)

### SPOILER ESD S3 SRC

07525..NRGR



**TOE CAP:** in carbon fibre, non-magnetic, insulating, resistant to 200J.

**ANTI-PERFORATION INSOLE:** made from zero-perforation textile fibre.

**SOLE:** dual-density polyurethane with energy absorption on the heel.

**REMOVABLE INSOLE:** antistatic in PU with ergonomic thermoforming.

**LINING:** in breathable sock knit.

**UPPER:** sock type in breathable micro-perforated 3D fabric, high-frequency processing and water-repellent film coating, micro-injected inserts.

**SIZES:** 38-48 (UK 5 - 13)

## FLAP ESD S1P SRC

07525..BMAF



**TOE CAP:**  
in carbon fibre, non-magnetic, insulating, resistant to 200J.

**ANTI-PERFORATION INSOLE:**  
made from zero-perforation textile fibre.

**SOLE:**  
dual-density polyurethane  
with energy absorption on the heel.

**REMOVABLE INSOLE:**  
antistatic in PU with ergonomic  
thermoforming.

**LINING:**  
in breathable sock knit.

**UPPER:**  
sock type in breathable micro-perforated  
3D fabric, high-frequency processing  
and micro-injected inserts.

**SIZES:**  
38-48 (UK 5 - 13)

## WING ESD S1P SRC

07525..NRAZ



**TOE CAP:**  
in carbon fibre, non-magnetic, insulating, resistant to 200J.

**ANTI-PERFORATION INSOLE:**  
made from zero-perforation textile fibre.

**SOLE:**  
dual-density polyurethane  
with energy absorption on the heel.

**REMOVABLE INSOLE:**  
antistatic in PU with ergonomic  
thermoforming.

**LINING:**  
in breathable sock knit.

**UPPER:**  
sock type in breathable micro-perforated  
3D fabric, high-frequency processing  
and micro-injected inserts.

**SIZES:**  
38-48 (UK 5 - 13)

## HALO ESD S1P SRC

07525..NRVF



**TOE CAP:**  
in carbon fibre, non-magnetic, insulating, resistant to 200J.

**ANTI-PERFORATION INSOLE:**  
made from zero-perforation textile fibre.

**SOLE:**  
dual-density polyurethane  
with energy absorption on the heel.

**REMOVABLE INSOLE:**  
antistatic in PU with ergonomic  
thermoforming.

**LINING:**  
in breathable sock knit.

**UPPER:**  
sock type in breathable micro-perforated  
3D fabric, high-frequency processing  
and micro-injected inserts.

**SIZES:**  
38-48 (UK 5 - 13)



# NEW ALLROAD Line

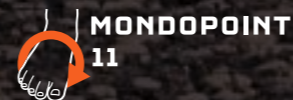
**SAFETY FOOTWEAR** IN NYLON AND WATER-REPELLENT **MICROFIBRE**.  
**PHYLON SOLE** WITH **CROSSGRIP RUBBER** BOTTOM. LIGHT, DURABLE AND SUITABLE FOR ALL TYPES OF USE (**OUTDOOR AND INDOOR**).



**CROSSGRIP**

**ULTRALIGHT SOLE WITH PHYLON\* MIDSOLE AND CROSSGRIP RUBBER TREAD. IT FEATURES AN IDEAL SCULPTURE FOR MAXIMUM GRIP AND STABILISATION ON GRAVELLY, MUDDY AND SNOW-COVERED SURFACES. LIGHT AND COMFORTABLE, IT ABSORBS VIBRATIONS AND PREVENTS DAMAGE TO THE LOWER LIMBS AND THE SPINE.**

EN ISO 20345:2011



\* Phylon is a light and resistant plastic made with EVA foam obtained by injection of compressed air.

## BAKU S3 SRC

07528..NRVF



**TOE CAP:**  
in non-magnetic composite, insulating, resistant to 200J.

**ANTI-PERFORATION INSOLE:**  
made from zero-perforation textile fibre.

**SOLE:**  
phylon + nitrile rubber with energy absorption on the heel.

**REMOVABLE INSOLE:**  
antistatic in PU with ergonomic thermoforming.

**LINING:**  
breathable micro-perforated 3D fabric.

**UPPER:**  
in nylon and water-repellent microfibre.

**SIZES:**  
38-48 (UK 5 - 13)

## MOTEGI S3 SRC

07529..NRGF



**TOE CAP:**  
in non-magnetic composite, insulating, resistant to 200J.

**ANTI-PERFORATION INSOLE:**  
made from zero-perforation textile fibre.

**SOLE:**  
phylon + nitrile rubber with energy absorption on the heel.

**REMOVABLE INSOLE:**  
antistatic in PU with ergonomic thermoforming.

**LINING:**  
breathable micro-perforated 3D fabric.

**UPPER:**  
in nylon and water-repellent microfibre.

**SIZES:**  
38-48 (UK 5 - 13)

## SOCHI S3 SRC

07528..BMGF



**TOE CAP:**  
in non-magnetic composite, insulating, resistant to 200J.

**ANTI-PERFORATION INSOLE:**  
made from zero-perforation textile fibre.

**SOLE:**  
phylon + nitrile rubber with energy absorption on the heel.

**REMOVABLE INSOLE:**  
antistatic in PU with ergonomic thermoforming.

**LINING:**  
breathable micro-perforated 3D fabric.

**UPPER:**  
in nylon and water-repellent microfibre.

**SIZES:**  
38-48 (UK 5 - 13)

## STIRIA S3 SRC

07528..NRNR



**TOE CAP:**  
in non-magnetic composite, insulating, resistant to 200J.

**ANTI-PERFORATION INSOLE:**  
made from zero-perforation textile fibre.

**SOLE:**  
phylon + nitrile rubber with energy absorption on the heel.

**REMOVABLE INSOLE:**  
antistatic in PU with ergonomic thermoforming.

**LINING:**  
breathable micro-perforated 3D fabric.

**UPPER:**  
in nylon and water-repellent microfibre.

**SIZES:**  
38-48 (UK 5 - 13)

## OKAYAMA S3 SRC

07529..NRNR



**TOE CAP:**  
in non-magnetic composite, insulating, resistant to 200J.

**ANTI-PERFORATION INSOLE:**  
made from zero-perforation textile fibre.

**SOLE:**  
phylon + nitrile rubber with energy absorption on the heel.

**REMOVABLE INSOLE:**  
antistatic in PU with ergonomic thermoforming.

**LINING:**  
breathable micro-perforated 3D fabric.

**UPPER:**  
in nylon and water-repellent microfibre.

**SIZES:**  
38-48 (UK 5 - 13)



**SAFETY FOOTWEAR IN NYLON AND SUEDE. DURABLE AND SUITABLE FOR ALL TYPES OF USE (OUTDOOR AND INDOOR).**



**SOLE IN DUAL-DENSITY POLYURETHANE WITH ENERGY ABSORPTION ON THE HEEL.**

## HINWIL S1P SRC

07519..NRNR



**TOE CAP:**  
in non-magnetic composite, insulating, resistant to 200J.  
**ANTI-PERFORATION INSOLE:**  
made from zero-perforation textile fibre.  
**SOLE:**  
dual-density polyurethane with energy absorption on the heel.  
**REMOVABLE INSOLE:**  
antistatic in PU  
**LINING:**  
breathable micro-perforated 3D fabric.  
**UPPER:**  
in fine suede with high abrasion resistance.  
**SIZES:**  
36-48 (UK 3 ½ -13)

## WOKING S1P SRC

07519..NRRS



**TOE CAP:**  
in non-magnetic composite, insulating, resistant to 200J.  
**ANTI-PERFORATION INSOLE:**  
made from zero-perforation textile fibre.  
**SOLE:**  
dual-density polyurethane with energy absorption on the heel.  
**REMOVABLE INSOLE:**  
antistatic in PU  
**LINING:**  
breathable micro-perforated 3D fabric.  
**UPPER:**  
in fine suede with high abrasion resistance.  
**SIZES:**  
36-48 (UK 3 ½ -13)

## ZELTWEG S3 SRC

07524..NRNR



**TOE CAP:**  
in non-magnetic composite, insulating, resistant to 200J.  
**ANTI-PERFORATION INSOLE:**  
made from zero-perforation textile fibre.  
**SOLE:**  
dual-density polyurethane with energy absorption on the heel.  
**REMOVABLE INSOLE:**  
antistatic in PU  
**LINING:**  
breathable micro-perforated 3D fabric.  
**UPPER:**  
in water penetration-resistant nylon and suede.  
**SIZES:**  
36-48 (UK 3 ½ -13)

# NEW ARCTIC Line

**SAFETY ANKLE BOOTS WITH SPECIAL DRY RESPIRATION SYSTEM (DRS) WATER-RESISTANT MEMBRANE, IN HIGH-QUALITY WATER-REPELLENT MICROFIBRE AND MICRO-INJECTED INSERTS. HARD-WEARING AND BREATHABLE, IT IS IDEAL IN PARTICULARLY DAMP OR WET ENVIRONMENTS.**



**SOLE IN DUAL-DENSITY POLYURETHANE WITH ENERGY ABSORPTION ON THE HEEL.**

CE EN ISO 20345:2011



## ARCTIC S3 WR SRC

07533..NRAZ



- TOE CAP:** fibreglass, non-magnetic, insulating, resistant to 200J.
- ANTI-PERFORATION INSOLE:** made from zero-perforation textile fibre.
- SOLE:** dual-density polyurethane with energy absorption on the heel.
- REMOVABLE INSOLE:** antistatic in PU.
- LINING:** breathable micro-perforated 3D fabric.
- UPPER:** in high-quality water-repellent microfibre, micro-injected inserts and special DRS WATER-RESISTANT membrane.
- SIZES:** 36-47 (UK 3 1/2 -12)

Footwear designed for all those who are forced to work in environments characterised by a high presence of water. WR footwear is in fact made with materials and techniques that prevent the entry of water while guaranteeing excellent breathability and therefore perfect hygrothermal comfort.

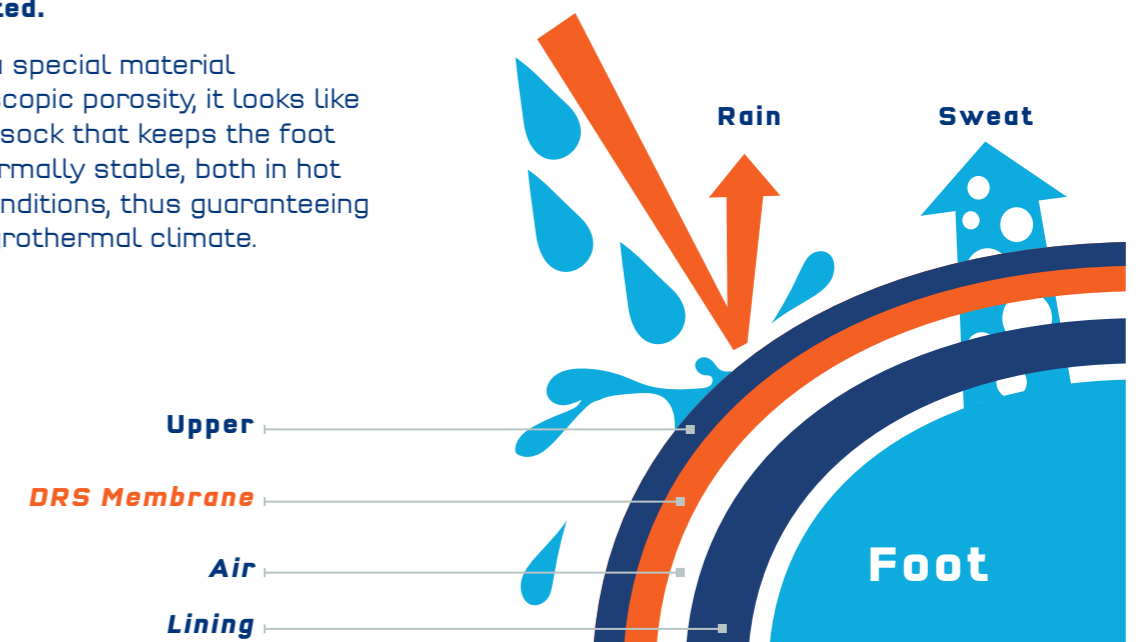
**WALK TEST**  
(according to EN ISO 20345:2011)  
1,000 steps (about 20 min.) in a tank containing 3 cm of water, the wet internal surface must be  $\leq 3 \text{ cm}^2$ .



### DRS MEMBRANE BY SPARCO TEAMWORK (DRY RESPIRATION SYSTEM):

The special DRS membrane by SPARCO TEAMWORK ensures maximum breathability and comfort while preventing water from penetrating into the upper, leaving the feet always dry and protected.

Made with a special material with microscopic porosity, it looks like an invisible sock that keeps the foot dry and thermally stable, both in hot and cold conditions, thus guaranteeing an ideal hygrothermal climate.



**ULTRALIGHT, FLEXIBLE AND BREATHABLE OCCUPATIONAL FOOTWEAR.** DESIGNED FOR WORK WHERE THE RISK ANALYSIS REQUIRES **NEITHER A PROTECTIVE TOE NOR AN ANTI-PERFORATION PLATE**, TO GIVE THE USER MAXIMUM COMFORT **IN COMPLIANCE WITH THE SAFETY AND HEALTH REQUIREMENTS OF THE EN ISO 20347:2012 STANDARD - CE MARKING.**

CE EN ISO 20347:2012

MONDOPOINT  
10,5

Self-cleaning profiles  
to increase flexibility.

Laminar profiles  
to increase grip.

Laminar engraving  
for greater slipping  
resistance.

TWIST<sup>TECH</sup>

**ULTRALIGHT SOLE WITH PHYLON\*  
MIDSOLE AND RUBBER TREAD.**

\* Phylon is a light and resistant plastic made with EVA foam obtained by injection of compressed air.

### PALMA 01 SRA

001289..NRNR



**SOLE:**  
phylon midsole and nitrile rubber tread.

**INSOLE:**  
breathable in memory foam.

**LINING:**  
breathable micro-perforated 3D fabric.

**UPPER:**  
with breathable micro-perforated fabric,  
micro-injected reinforcement  
on ultra-abrasion-resistant toe.

**SIZES:**  
37-47 (UK 4 ½ - 12)

### DURANGO 01 SRA

001289..NRAZ



**SOLE:**  
phylon midsole and nitrile rubber tread.

**INSOLE:**  
breathable in memory foam.

**LINING:**  
breathable micro-perforated 3D fabric.

**UPPER:**  
with breathable micro-perforated fabric,  
micro-injected reinforcement  
on ultra-abrasion-resistant toe.

**SIZES:**  
37-47 (UK 4 ½ - 12)



## CHARADE 01 SRA

001289..BMAF



**SOLE:**  
phylon midsole and nitrile rubber tread.

**INSOLE:**  
breathable in memory foam.

**LINING:**  
breathable micro-perforated 3D fabric.

**UPPER:**  
with breathable micro-perforated fabric,  
micro-injected reinforcement  
on ultra-abrasion-resistant toe.

**SIZES:**  
37-47 (UK 4 ½ - 12)

## ALGARVE 01 SRA

001289..NRRS



**SOLE:**  
phylon midsole and nitrile rubber tread.

**INSOLE:**  
breathable in memory foam.

**LINING:**  
breathable micro-perforated 3D fabric.

**UPPER:**  
with breathable micro-perforated fabric,  
micro-injected reinforcement  
on ultra-abrasion-resistant toe.

**SIZES:**  
37-47 (UK 4 ½ - 12)

## BOAVISTA 01 SRA

001289..NRGF



**SOLE:**  
phylon midsole and nitrile rubber tread.

**INSOLE:**  
breathable in memory foam.

**LINING:**  
breathable micro-perforated 3D fabric.

**UPPER:**  
with breathable micro-perforated fabric,  
micro-injected reinforcement  
on ultra-abrasion-resistant toe.

**SIZES:**  
37-47 (UK 4 ½ - 12)



# NEW TORQUE Line MARTINI RACING

ULTRALIGHT, FLEXIBLE AND BREATHABLE  
OCCUPATIONAL FOOTWEAR IN MARTINI RACING LIVRY.  
DESIGNED FOR WORK WHERE THE RISK ANALYSIS REQUIRES  
NEITHER A PROTECTIVE TOE NOR AN ANTI-PERFORATION PLATE,  
TO GIVE THE USER MAXIMUM COMFORT IN COMPLIANCE  
WITH THE SAFETY AND HEALTH REQUIREMENTS  
OF THE EN ISO 20347:2012 STANDARD - CE MARKING.



ULTRALIGHT SOLE WITH PHYLON\*  
MIDSOLE AND RUBBER TREAD.

\* Phylon is a light and resistant plastic made with EVA foam obtained by injection of compressed air.

CE EN ISO 20347:2012

MONDOPOINT  
10,5

## MIKI 01 SRA

01289MR..BM



**SOLE:**  
phylon midsole and nitrile rubber tread.

**INSOLE:**  
breathable in memory foam.

**LINING:**  
breathable micro-perforated 3D fabric.

**UPPER:**  
with breathable micro-perforated fabric,  
micro-injected reinforcement  
on ultra-abrasion-resistant toe.

**SIZES:**  
37-47 (UK 4 1/2 - 12)

## REPLICA HOODIE MARTINI RACING

001144MR..

### SPECIFICATIONS:

Hooded sweatshirt made with an ultra-soft cotton blend featuring the iconic Martini Racing livery. The logo patches and stripes are fully embroidered.

### MATERIAL:

65% cotton - 35% polyester  
300 gr. m2 - hood lined in soft jersey

### SIZES:

XS -XXL



W  
E  
W  
E  
W  
E  
W  
E  
W  
E  
W  
E  
W  
E  
W  
E  
W  
E  
W  
E





## SEATTLE NAVY

02404BM..

**SOFTSHELL JACKET****WEIGHT:** 270 GR/M<sup>2</sup>**COMPOSITION:** 100% polyester**SIZES:** S - 3XL**SPECIFICATIONS:**

- Soft and light polyester water-repellent.
- Breathable stretch side inserts.
- Reinforced elbow inserts.
- Removable windproof hood.

## SEATTLE BLACK

02404NR..

**SOFTSHELL JACKET****WEIGHT:** 270 GR/M<sup>2</sup>**COMPOSITION:** 100% polyester**SIZES:** S - 3XL**SPECIFICATIONS:**

- Soft and light polyester water-repellent.
- Breathable stretch side inserts.
- Reinforced elbow inserts.
- Removable windproof hood.

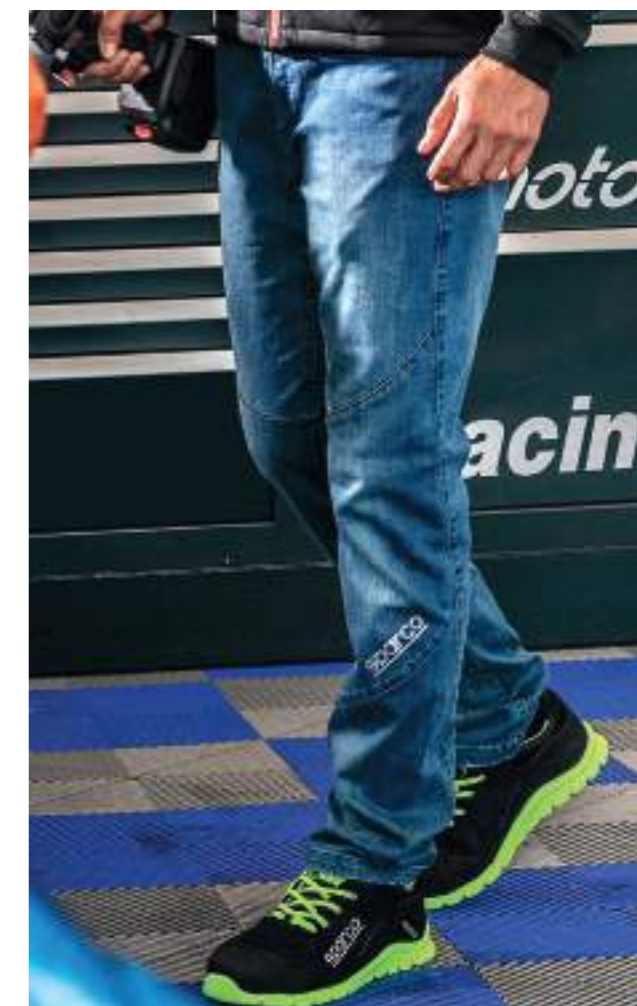


## HOUSTON

02401GSRs..

**CARGO MULTISEASON PANTS****WEIGHT:** 310/320 gr/sqm**COMPOSITION:** 98% canvas cotton 2% elastane**SIZES:** S - 3XL**SPECIFICATIONS:**

- Resistant stretch canvas cotton
- padded inserts on knees
- Closing flap with contrasting interior and elasticated sides
- Multi-pocket



## DENVER

02409DE..

**JEANS****WEIGHT:** 350 gr/m<sup>2</sup>**COMPOSITION:** 98% drill cotton • 2% elastane**SIZES:** S - 3XL**SPECIFICATIONS:**

- Stretch denim.
- Contrasting interior and elasticated sides.
- 5 pockets.

**BOSTON BLACK****02400GS..****CARGO MULTISEASON PANTS****WEIGHT:** 260/270 gr/m<sup>2</sup>**COMPOSITION:** 98% drill cotton • 2% elastane**SIZES:** S - 3XL**SPECIFICATIONS:**

- Soft stretch drill cotton
- Closing flap with contrasting interior and elasticated sides
- Multi-pocket

**BOSTON GREY****02400NR..****CARGO MULTISEASON PANTS****WEIGHT:** 260/270 gr/m<sup>2</sup>**COMPOSITION:** 98% drill cotton • 2% elastane**SIZES:** S - 3XL**SPECIFICATIONS:**

- Soft stretch drill cotton
- Closing flap with contrasting interior and elasticated sides
- Multi-pocket

**NEW****BERMUDA BLACK****02410NR..****BERMUDA CARGO****WEIGHT:** 220 GR/M2**COMPOSITION:** 97% cotton 3% elastane  
lycra gabardin**SIZES:** S - 2XL**SPECIFICATIONS:**

- Soft and resistant stretch cotton fabric with contrast reinforcement stitching
- Flap closure at the waist with snap button, contrasting interior and elastic at the sides
- Multi-pocket

**NEW****BERMUDA GREY****02410GS..****BERMUDA CARGO****WEIGHT:** 220 GR/M2**COMPOSITION:** 97% cotton 3% elastane • lycra gabardin**SIZES:** S - 2XL**SPECIFICATIONS:**

- soft and resistant stretch cotton fabric with contrast reinforcement stitching
- flap closure at the waist with snap button, contrasting interior and elastic at the sides
- multi-pocket



## WILSON ROYAL

02405AZ..



## WINDSTOPPER JACKET

**WEIGHT:** 100 gr/m<sup>2</sup>**COMPOSITION:** 100% polyester**SIZES:** S - 3XL**SPECIFICATIONS:**

- soft and lightweight water-repellent Polyester fabric.
- Coated zips with rubbered pullers.
- Elastic cuffs and hem.

NEW

## WILSON NAVY

02405BM..



## WINDSTOPPER JACKET

**WEIGHT:** 100 gr/m<sup>2</sup>**COMPOSITION:** 100% polyester**SIZES:** S - 3XL**SPECIFICATIONS:**

- Soft and lightweight water-repellent Polyester fabric.
- Coated zips with rubbered pullers.
- Elastic cuffs and hem.

## WILSON BLACK

02405NR..



## WINDSTOPPER JACKET

**WEIGHT:** 100 gr/m<sup>2</sup>**COMPOSITION:** 100% polyester**SIZES:** S - 3XL**SPECIFICATIONS:**

- soft and lightweight water-repellent Polyester fabric.
- Coated zips with rubbered pullers.
- Elastic cuffs and hem.

NEW

## WILSON RED

02405RS..



## WINDSTOPPER JACKET

**WEIGHT:** 100 gr/m<sup>2</sup>**COMPOSITION:** 100% polyester**SIZES:** S - 3XL**SPECIFICATIONS:**

- Soft and lightweight water-repellent Polyester fabric.
- Coated zips with rubbered pullers.
- Elastic cuffs and hem.



## PHOENIX NAVY

02406BM..



## FULL-ZIP SWEATSHIRT

**WEIGHT:** 260 gr/m<sup>2</sup>**COMPOSITION:** outside 100% polyester  
inside 100% cotton**SIZES:** S - 3XL**SPECIFICATIONS:**

- External fabric in soft and light polyester.
- Soft cotton jersey lining.
- Coated zips with rubbered pullers.
- Elasticated cuffs.

## PHOENIX RED

02406NR..



## FULL-ZIP SWEATSHIRT

**WEIGHT:** 260 gr/m<sup>2</sup>**COMPOSITION:** outside 100% polyester  
inside 100% cotton**SIZES:** S - 3XL**SPECIFICATIONS:**

- External fabric in soft and light polyester.
- Soft cotton jersey lining.
- Coated zips with rubbered pullers.
- Elasticated cuffs.


**PORTLAND ROYAL 02407AZ..**

**POLO**
**WEIGHT:** 200 gr/m<sup>2</sup>
**COMPOSITION:** 100% cotton

**SIZES:** S - 3XL

**SPECIFICATIONS:**

- Soft and light piqué cotton.
- Contrast color inserts.
- Stretch sleeves hem.


**TRENTON ROYAL 02408AZ..**

**T-SHIRT**
**WEIGHT:** 180 gr/m<sup>2</sup>
**COMPOSITION:** 95% cotton • 5% elastane

**SIZES:** S - 3XL

**SPECIFICATIONS:** Soft stretch cotton.

- Contrast color inserts.
- Soft rib collar.

**PORTLAND BLACK 02407NR..**

**POLO**
**WEIGHT:** 200 gr/m<sup>2</sup>
**COMPOSITION:** 100% cotton

**SIZES:** S - 3XL

**SPECIFICATIONS:**

- Soft and light piqué cotton.
- Contrast color inserts.
- Stretch sleeves hem.

**PORTLAND NAVY 02407BM..**

**POLO**
**WEIGHT:** 200 gr/m<sup>2</sup>
**COMPOSITION:** 100% cotton

**SIZES:** S - 3XL

**SPECIFICATIONS:**

- Soft and light piqué cotton.
- Contrast color inserts.
- Stretch sleeves hem.

**TRENTON BLACK 02408NR..**

**T-SHIRT**
**WEIGHT:** 180 gr/m<sup>2</sup>
**COMPOSITION:** 95% cotton • 5% elastane

**SIZES:** S - 3XL

**SPECIFICATIONS:**

- Soft stretch cotton.
- Contrast color inserts.
- Soft rib collar.

**TRENTON NAVY 02408BM..**

**T-SHIRT**
**WEIGHT:** 180 gr/m<sup>2</sup>
**COMPOSITION:** 95% cotton • 5% elastane

**SIZES:** S - 3XL

**SPECIFICATIONS:**

- Soft stretch cotton.
- Contrast color inserts.
- Soft rib collar.





GLOVES  
GLOVES  
GLOVES  
GLOVES  
GLOVES  
GLOVES  
GLOVES  
GLOVES  
GLOVES  
GLOVES

NEW

**SPORTAC (PPE CAT. II)**

**002097..GI**



**PROTECTIVE GLOVES**

- EN 388:2016
- EN ISO 21420

**PPE CATEGORY II:**

Synthetic glove protecting against mechanical risks

**ABRASION RESISTANCE:**

- 4 (performance levels)

**RESISTANCE TO BLADE CUTTING:**

- Coupe test: X (not done)

**TEAR RESISTANCE:**

- 4 (performance levels)

**PUNCTURE RESISTANCE:**

- 3 (performance levels)

**RESISTANCE TO CUTTING BY BLADE EN ISO 13997:**

- D (performance levels)

**EN PROTECTION AGAINST IMPACTS:**

- P (performance level)

**SIZES:**

8-11

**SPECIFICATIONS:**

- Adamant® diamond structure for a maximum level of cutting resistance;
- exceptional comfort and dexterity;
- palm resistant to grease and wet grime;
- impact resistant on the back, shock absorbing structure on the palm of the hand.

**MECA III**

**WORK GLOVES**



**002093..BMAF** NEW

**002093..NRGF** NEW



**002093..NR**

**002093..RS**

**002093..AZ**

**COMPOSITION:**

- 47% polyester
- 35% suede
- 18% elastane

**SIZES:**

S - XL

**SPECIFICATIONS:**

- the palms are in synthetic, abrasion-resistant leather and there are reinforcements positioned between the thumb and index finger;
- back in abrasion-resistant stretch and printed fabric;
- fastening strap to adjust fit.

**HYPERGRIP**

**002094..NRRS**



**MULTIPURPOSE GLOVES**

in micro-perforated polyamide and palm in high-grip microfibre, with fastening strap.

**COMPOSITION:**

- 85% polyamide
- 15% elastane

**SIZES:**

S - XL

**SPECIFICATIONS:**

- touch-sensitive fingertips on index and thumb;
- foam protectors on the palm;
- wrist fastening strap.





SPORTS  
 SPORTS  
 SPORTS  
 SPORTS  
 SPORTS  
 SPORTS  
 SPORTS  
 SPORTS  
 SPORTS  
 SPORTS  
 SPORTS

Teamwork  
 Teamwork  
 Teamwork  
 Teamwork  
 Teamwork  
 Teamwork  
 Teamwork  
 Teamwork  
 Teamwork  
 Teamwork

95



<b>TOTEM</b>	<b>0750009</b>
<p><b>TOTEM</b> Light and durable material, suitable to show <b>8 shoe models</b> and a pair of shoes on the crowner.</p>	

<b>SHELF HIGHLIGHTER</b>	<b>0750011</b>
<p><b>H 17 X L 30 X P 17,5 CM</b> Light and durable material, suitable to show 1 shoe. <b>5-piece set.</b></p>	

**NEW**

<b>LANYARD</b>	<b>099104AZF10 (KIT OF 10)</b> <b>099104AZF</b>

**NEW**

<b>KEYCHAIN TEAMWORK</b>	<b>099092TEAMWORK</b>

**NEW**

<b>KEYCHAIN GYMKHANA</b>	<b>099092GKHANA</b>

<b>COUNTER DISPLAY</b>	<b>0750010</b>
<p><b>H 31 X L 38 X P 28 CM</b> Shaped like a pedal set, with an unmistakable racing style. Light and durable material, suitable to show 1 pair of shoes.</p>	

<b>FLYER DISPLAY</b>	<b>099064</b>
<p><b>H 39 X L 15 X P 15 CM</b> Flyers container, light and durable material, with an unmistakable racing style.</p>	

# CERTIFICATIONS AND CE STANDARDS

## GUIDE TO EN ISO 20345:2011 STANDARDS

Footwear for professional use in accordance with EN ISO 20345:2011 are marked with an "S" (Safety) as Safety Footwear. The so-called "basic" shoe is marked with the letters "SB" (S = Safety - "B" = Basic). This footwear must have the following minimum requirements:

- height of the upper
- toe cap (minimum length, minimum supporting base)
- upper in fresh split leather, microfibre and similar
- front lining
- insole
- sole in any type of material, can be smooth
- the upper, in the low footwear, can be opened in the heel area.

In "SB" footwear, the following requirements are never included unless specified in detail:

- antistatic
- energy absorption of the heel
- dynamic waterproofing of the upper
- sole with lugs
- rear lining
- water-repellent upper
- anti-puncture plate or fabric.

The meaning of the stamping that you can find on the footwear is given below. They have been designed, equipped with toe caps designed to provide protection against impact when tested at an energy level of 200J".

### EN ISO 20345:2011

Protective footwear in accordance with EN ISO 20345:2011 is called "Protective footwear".

It is basically identical to safety footwear. The only differences are the following:

- impact protection toe cap with energy of 100 J and compression of 10 KN
- it is marked with "P" (Protective) in place of the "S" (Safety).

NB: use in all workplaces where the protection of 100 J is sufficient.

### THE MEANING OF THE EUROPEAN STANDARDS

EN ISO 20349:2010 Small splashes of molten metal such as those produced during welding operations and related processes.

EN ISO 20344:2011 Test methodology and general requirements.

EN ISO 20345:2011 Specifications of safety footwear with toe resistance at 200 J.

EN ISO 20346:2011 Specifications of protective footwear with toe resistance at 100 J.

EN ISO 20347:2012 Specifications of "work" or "professional" footwear. No specific toe cap resistance.

UNI 11583:2015 Footwear marked UNI 11583:2015 meets the requirements of the UNI 11583:2015 standard which specifies the requirements for safety, protective and work footwear for professional use for work on sloping roofs.

FOOTWEAR CLASSIFIED "S"	
SB	BASIC Requirements
S1/01	S1/01 BASIC requirements + S1 supplemented by: <ul style="list-style-type: none"> <li>closed back (also low footwear)</li> <li>antistatic</li> <li>FO resistance to hydrocarbons</li> <li>energy absorption capacity of the heel</li> </ul>
S2/02	S2/02 BASIC requirements + S2 supplemented by: <ul style="list-style-type: none"> <li>dynamic waterproofing of the upper material</li> </ul>
S3/03	S3/03 BASIC requirements + S3 supplemented by: <ul style="list-style-type: none"> <li>anti-puncture plate</li> <li>sole with lugs or tread</li> </ul>
S4/04	S4/04 BASIC requirements + S4 supplemented by: <ul style="list-style-type: none"> <li>antistatic</li> <li>energy absorption of the heel</li> <li>FO resistance to hydrocarbons</li> </ul>
S5	S5 BASIC requirements + S5 supplemented by: <ul style="list-style-type: none"> <li>anti-puncture plate</li> <li>sole with lugs or tread</li> </ul>

SLIP RESISTANCE CLASSES	
SRA	Slip resistance with ceramic ground with water and detergent.
SRB	Slip resistance with steel and glycerine ground.
SRC	Slip resistance with both conditions described above.

All Sparco Teamwork safety footwear is certified with SRC class slip resistance.

Marking of conformity with Regulation (EU) 2016/425	Name del fabbricante <b>SPARCO</b>	Production date <b>01/022</b>
EN ISO 20345:2011 European standard	<b>S3</b> Protection class	<b>00000 - LANDO</b> Product code
	<b>SRC</b> Slip resistance requirement	
	<b>WR</b> Additional requirements	

The following are affixed on the gusset or on the tongue of the shoe:  
 - manufacturer's mark - the article code - the month and year of manufacture - CE conformity marking

PROTECTION CLASS SYMBOL	EN ISO 20345:2011				EN ISO 20347:2012				EN ISO 20345:2011		EN ISO 20347:2012		Minimum required values EN ISO 20345:2011 + EN ISO 20347:2012
	SB	S1	S2	S3	OB	O1	O2	O3	S4	S5	O4	O5	
Closed heel area	0	*	*	*	0	*	*	*	*	*	*	*	
Toe cap resistant to an impact of 200J	*	*	*	*	-	-	-	-	*	*	-	-	Mechanical risk, toe protection, falling objects, foot impacts, height after impact $\geq 14\text{mm}$ (size 42)
Toe cap resistant to static compression of 15 kN	*	*	*	*	-	-	-	-	*	*	-	-	Mechanical risk, toe protection, falling objects, foot impacts, height after impact $\geq 14\text{mm}$ (size 42)
A Antistatic footwear	0	*	*	*	0	*	*	*	*	*	*	*	Electrical resistance of the bottom compressed between $1 \times 10^5 \text{ OHM}$ and $1 \times 10^9 \text{ OHM}$
E Energy absorption in the heel area	0	*	*	*	0	*	*	*	*	*	*	*	Mechanical risk: reduction of trauma to the heel resulting from impacts or falls from limited heights, mechanical energy $\geq 20 \text{ Joules}$
FO ex oro Resistance to hydrocarbons of the sole	0	*	*	*	0	0	0	0	*	*	0	0	Volume increase of the sole sample $< 12\%$
WRU Penetration and water absorption of the upper	0	-	*	*	0	0	*	*	-	-	-	-	Resistance to penetration and absorption of water from the upper. H2O absorption after $60' \pm 30\%$ H2O transmitted after $60' \pm 0.2 \text{ g}$
P Resistance to perforation of the bottom of the footwear	0	0	0	*	0	0	0	*	0	*	0	*	F $\geq 1100 \text{ N}$
CI Insulation from the cold of the bottom of the footwear	0	0	0	0	0	0	0	0	0	0	0	0	Increase T $\geq 22^\circ\text{C}$ placed on a plate at a T of $150^\circ\text{C}$ for 30'
HI Insulation from the heat of the bottom of the footwear	0	0	0	0	0	0	0	0	0	0	0	0	Decrease T $\geq 10^\circ\text{C}$ in an environment at $-17^\circ\text{C}$ for 30'
C Conductive footwear	0	-	-	-	0	-	-	-	-	-	-	-	Electrical resistance of the bottom $< 1 \times 10^5 \text{ OHM}$
HRO Heat resistance by contact of the sole	0	0	0	0	0	0	0	0	0	0	0	0	Sample in contact at $300^\circ\text{C}$ for 60'' - Does not melt
AN Ankle protection	0	0	0	0	0	0	0	0	0	0	0	0	Mechanical risk, ankle protection: average value transmitted force $\geq 10 \text{ kN}$ maximum value $< 15 \text{ kN}$
Electrically insulating footwear (Dielectric)	0*	-	-	-	0	-	-	-	0	0	0	0	Class 00 or Class 0 - CEI EN 50321 standard
WR Water resistant footwear	0	0	0	0	0	0	0	0	-	-	-	-	After 1000 steps or after 80' of automatic dynamic cycle, no more than $3 \text{ cm}^2$ of water must enter (stain)
M Metatarsal protection	0	0	0	0	-	-	-	-	0	0	-	-	Mechanical risk, metatarsal protection: falling objects, impact to the foot. Height after impact $\geq 40 \text{ mm}$ (size 42)
CR Cutting resistance of the upper - F $\geq 1100 \text{ N}$	0	0	0	0	0	0	0	0	0	0	0	0	F $\geq 1100 \text{ N}$
SRC (SRA+SRB) Requisito di antiscivolo	*	*	*	*	*	*	*	*	*	*	*	*	Protezione contro lo scivolamento su diverse superfici

\* = Mandatory requirement for the indicated category  
 0 = Optional requirement added to the mandatory ones, if indicated on the marking - = Non-mandatory requirement, check shoe stamping

### ESD CEI EN 61340-5-1 2016 | COR 1:2017 STANDARD

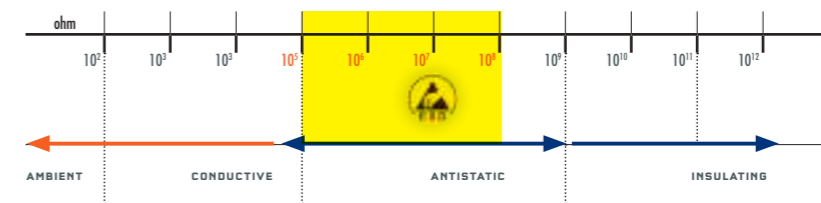
The abbreviation ESD (ElectroStaticDischarge) indicates a discharge of static energy that passes from one body to another. In hazardous workplaces, ESD discharges can be the cause of even serious accidents (starting a fire), and can damage machinery and their sensitive components.

ESD shoes are required for:

- Work with microchips
- Production of sensitive electrical parts
- In painting
- When working in contact with flammable liquids and gases

Evaluated on ESD by conditioning the shoe at 12% relative humidity:

- resistance of the footwear/operator combination | metal electrode less than  $1 \times 10^{-9} \text{ ohm}$
- storage capacity of the electric charge of the footwear/operator combination | metal electrode less than 100 volts



### REGULATION (EU) 2016/425

Article 47: EC certificates issued in accordance with Directive 89/686/EEC are valid until 21/04/2023. After 21/04/2019, all new models must be certified according to Regulation 2016/425.

### COMPLIANCE WITH THE REACH REGULATION

The company complies with the REACH Regulation (EC) no. 1907/2006 in force since 1 June 2007, ensuring that the products used and supplied by SPARCO TEAMWORK:

- do not contain SVHC (Substance of Very High Concern) substances;
- do not contain substances that are on the list in Annex XIV\_ of the REACH Regulation;
- do not contain substances that are on the constantly updated Candidate List;
- do not contain substances subject to restrictions (Annex XVII of REACH) that the relative restrictions of use are observed.

Furthermore, in the event that an article contains an SVHC (Substance of Very High Concern) substance or one on the Candidate List in concentrations higher than 0.1% weight/weight, sufficient information is provided with the name of the substance and instructions helpful for the safe use of the article (see Article 59.1 of REACH).

# ALPHABETICAL INDEX

## SHOES LINES

•ADELAIDE	Page 27	•MIKKO	Page 24
•ALBERT	Page 27	•MODENA	Page 32
•ALGARVE	Page 48	•MOTEGI	Page 39
•ARCTIC	Page 45	•NELSON	Page 20
•BAKU	Page 38	•NIGEL	Page 18
•BOAVISTA	Page 48	•NIKI	Page 20
•BRUCE	Page 30	•OKAYAMA	Page 40
•CHARADE	Page 48	•OTT	Page 24
•CLAY	Page 29	•PALMA	Page 46
•DANI	Page 14	•PETTER	Page 23
•DIDIER	Page 23	•RICARD	Page 27
•DONINGTON	Page 30	•RONNIE	Page 29
•DURANGO	Page 47	•SARNO	Page 33
•FLAP	Page 36	•SEB	Page 15
•GILLES	Page 30	•SOCHI	Page 40
•HALO	Page 36	•SPA	Page 28
•HANNU	Page 24	•SPLITTER	Page 34
•HINWIL	Page 43	•SPOILER	Page 35
•JACQUES	Page 19	•STIRIA	Page 40
•JODY	Page 19	•WING	Page 36
•JOS	Page 18	•WOKING	Page 43
•KEKE	Page 20	•ZELTWEG	Page 43
•LANDO	Page 14		
•LONATO	Page 33		
•LOSAIL	Page 28		
•MAGIONE	Page 32		
•MARCUS	Page 23		
•MARTINI	Page 17		
•MAX	Page 15		
•MIKI	Page 51		

## WORKWEAR

•BERMUDA	Page 57	•PORTLAND	Page 62
•BOSTON	Page 56	•SEATTLE	Page 54
•DENVER	Page 55	•TRENTON	Page 63
•HOUSTON	Page 55	•WILSON	Page 59
•PHOENIX	Page 61		

## GLOVES

•HYPERGRIP	Page 66
•MECA III	Page 67
•SPORTAC	Page 66

## POP TOOLS

•COUNTER DISPLAY	Page 71
•FLYER DISPLAY	Page 71
•LANYARD	Page 71
•PORTACHIAVI	Page 71
•SHELF HIGHLIGHTER	Page 70
•TOTEM	Page 70

### VALIDITY

From 01 January 2022 to 31 December 2022

The data and characteristics indicated in this price list are subject to changes without prior notice.

The photographic reproduction of the shades of colour may not be perfectly faithful to reality.

In order to constantly improve the collections, the products contained in this catalogue could be replaced or modified. The photos contained are purely illustrative and not binding.



teamwork@sparco.it  
+39 011.22.40.911



#### HEADQUARTERS

SPARCO S.p.A.  
Via Leini, 524  
10088 Volpiano (TO) - Italy  
Tel. +39 011 22.40.911  
e-mail: info@sparco.it  
www.sparco-official.com

#### BRANCHES

SPARCO TEAMWORK IBERIA, SL  
C/ Illa de Buda, 2  
Polígono industrial Can Canals  
08192 Sant Quirze del Vallés.  
Barcelona  
+34 93 806 54 94  
info@iberia.sparcoteamwork.com

sparcoteamwork.com